

[About Us](#)
[Donate](#)
[Get Involved](#)

Welcome to the May Immunodeficiency UK newsletter!



As lockdown restrictions are being eased and COVID-19 becomes more under control many of you may have mixed feelings. Some of you have told us you feel left behind as the world begins to open up, and lots of you are wondering if and to what extent the vaccine will work for you.

Please remember we are always here offer support and provide updated information as the situation develops. This week we shared the following articles on social media, which you may find helpful:

- BBC – [Covid: How should I protect myself now?](#)
- BBC – [Five ways to make hugging safer](#)
- Young Minds – [Tips for going from shielding to lockdown easing](#)

## Returning to Work

The thought of returning to your work environment after shielding is likely to affect people in different ways. Some of you may feel relief in being able to go back to some sense of normality and to see people, or you may feel anxious and apprehensive to go outside and into the workplace again. Remember whatever you are feeling is OK.



Our supportive guide is designed to help you to transition back into the workplace in a safe and comfortable way and arm you with information concerning your rights in returning to work.

[Read 'Going back to work after shielding'](#)

We've also created a guide for employers, to help them welcome back colleagues who have been shielding because of an underlying health condition that makes them more vulnerable than most people to COVID-19.

[Read 'Helping people return to work after shielding'](#)

## Immunoglobulin availability - impact of COVID



Lockdowns and restrictions during the COVID-19 pandemic have led to reduced plasma donations worldwide. Companies are reporting an approximate 20% drop in plasma donations in 2020 as compared to the previous year. It takes between 6-9 months for plasma to be converted into immunoglobulin (IG) products so the global reduction in plasma donation is now starting to be felt on the supply of IG in all countries.

### What impact will there be on patients in the next few months?

Immunodeficiency UK understands there will be limited availability of brands of 10% intravenous IG (IVIg) product. The NHS has informed homecare providers to restrict the usual supply of IVIg from 12 weeks to 4 weeks supply. If you are affected by this change you should receive a letter from your homecare provider.

These steps have been taken in effort to manage stock levels and to ensure the available stock is evenly distributed across the country and this will apply until late July 2021. The NHS has indicated that this should not impact on your overall supply or care.

### Should patients with immunodeficiency in the UK who are currently on IG therapy be worried by the world plasma shortage and any reduction in IG supplies that may follow?

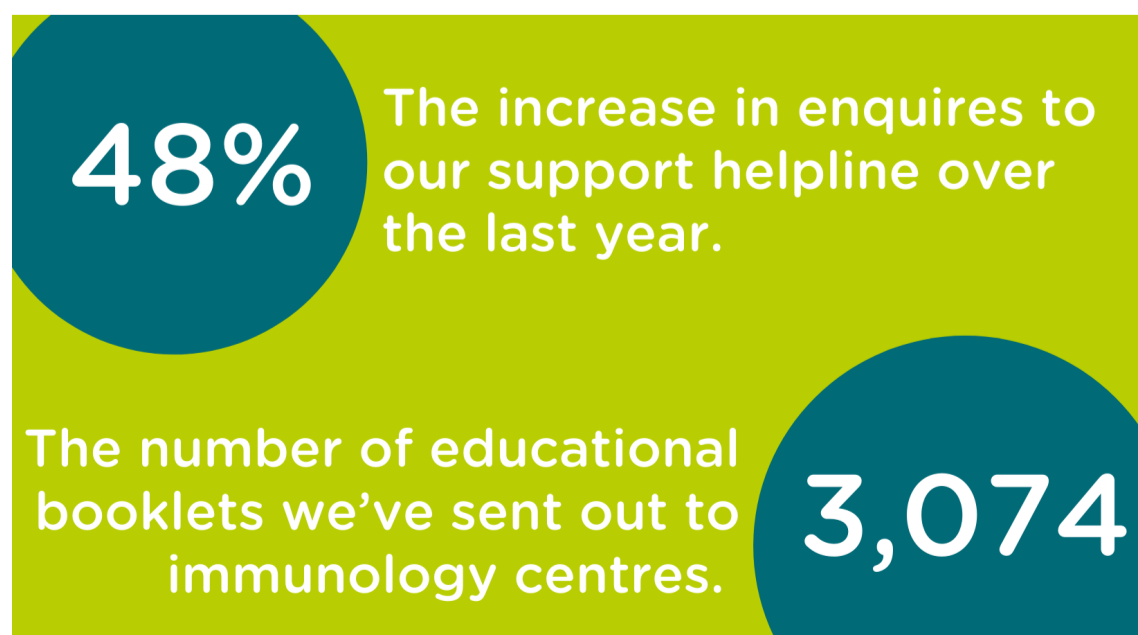
Regardless of where you live in the UK, patients should not be concerned that they will be unable to have IG therapy. In times of shortage of IG there are mechanisms in place to ensure patients continue to receive the treatment they need.

Please read our statement bringing you up to date on this matter.

[Immunoglobulin availability - impact of COVID](#)

The information we are providing is based on our current knowledge of the situation and we will continue to update you with information as we learn more from the NHS.

## Support and Awareness



This is only possible with your support. Please consider making a donation to Immunodeficiency UK, so we can continue to support those living with immunodeficiency, advocate on behalf of the community and raise awareness of immunodeficiency and the importance of diagnosis.

[Make a donation](#)

## Welcome to Lucy - a new member of our Medical Advisory Panel



Immunodeficiency UK is delighted to welcome Lucy Common to our Medical Advisory Panel. Lucy is an Advanced Clinical Nurse Specialist in Immunology at Salford Royal Hospital. Lucy says ‘Thank-you for asking me to join the Immunodeficiency UK expert panel, I am delighted and honoured to receive the request and gladly accept.’

[Read more about Lucy](#)

### Are you or someone you know living with secondary immunodeficiency?

We're looking for individuals and families to share their experiences and help us create greater understanding about secondary immunodeficiency. These stories will be added to our new website and help us improve the resources available to those with secondary immunodeficiency. We'll also share them on our social media to help raise awareness about diagnosis, treatment and what it's like to live with a secondary immunodeficiency.

If you've been affected by a secondary immunodeficiency and would like to get involved, please email Jen at [jen.rush@immunodeficiencyuk.org](mailto:jen.rush@immunodeficiencyuk.org).

### Remote consultations - your patient perspective



Thank you to everyone who has taken part so far in the Remote Consultation Survey!

The information gathered, using your anonymous feedback, will be used to compile a report which we will share with the immunodeficiency community and immunology service providers.

If you haven't yet completed the survey and would like to add your experience, please follow the link below:

[Take part in the survey](#)

We would be so grateful if you take part as it is so important you have a say in how these services are delivered.

### Funding for Immunodeficiency UK

We would like to thank Grifols for their restricted grant support to the development of a new website for Immunodeficiency UK.

Supported by an educational grant from Biotest (UK) Ltd



Facebook



Twitter



Instagram

© 2021 Immunodeficiency UK. All rights reserved | Registered charity number 1193166.

[Unsubscribe](#) [Privacy Policy](#)